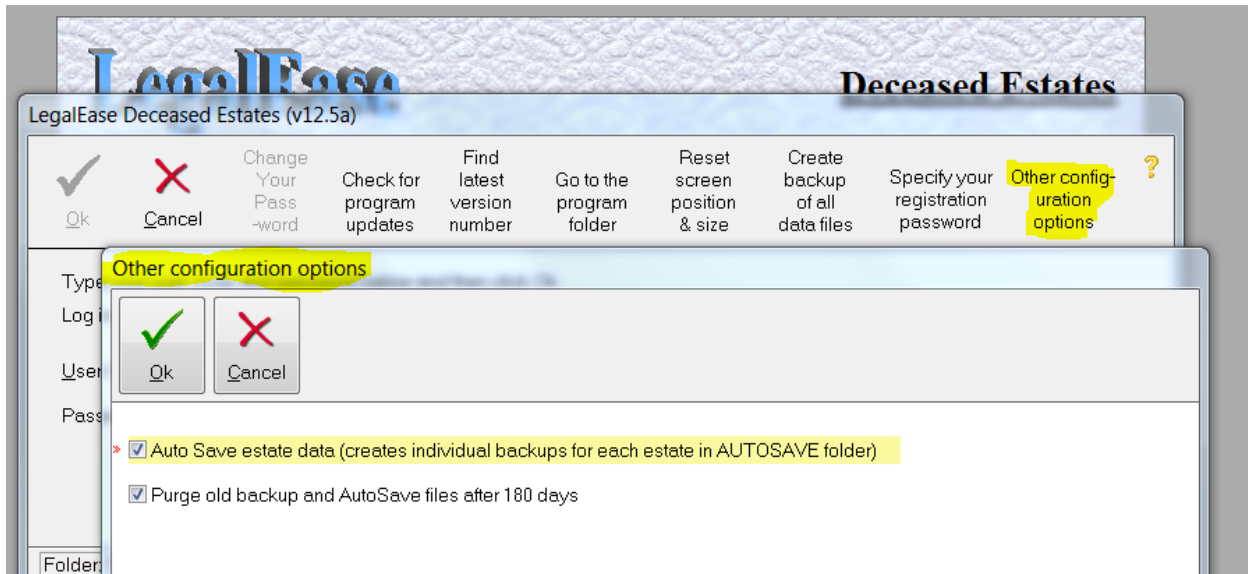


LegalEase

Deceased Estates Program Version 12.5a Enhancements

Auto Save / Purge

Added a button called “Other configuration options” to the login window to turn AutoSave and Purge ON or OFF.



If your LegalEase freezes / crashes after logging in you may have to turn these features off. Alternatively check the security settings on the AUTOSAVE folder. Your IT people must make sure users have full control of the AUTOSAVE folder and re-apply the permissions to the folder.

THE END